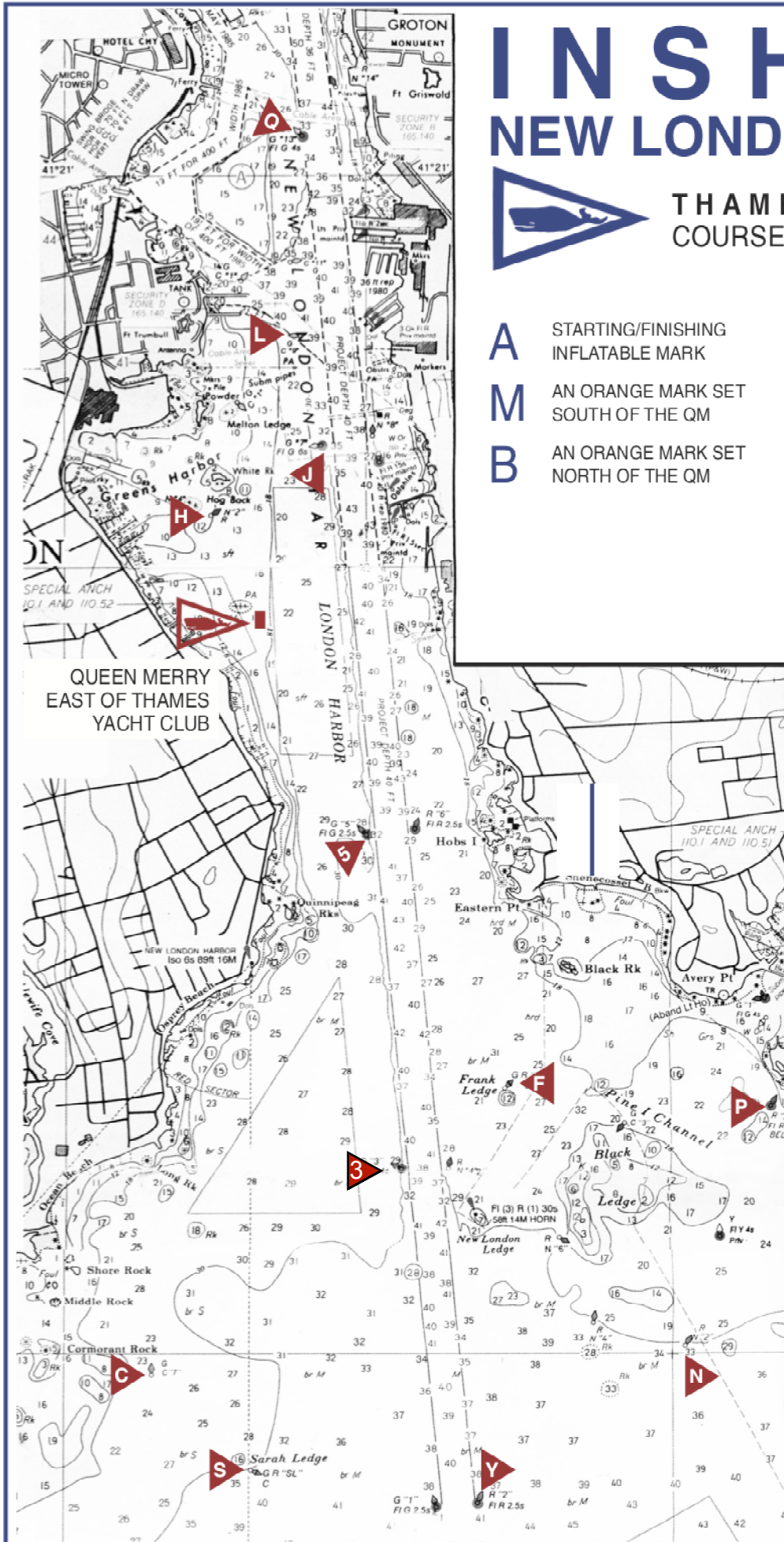


INSHORE NEW LONDON HARBOR



THAMES YACHT CLUB COURSE SYMBOLS AND MARKS

- | | | | |
|----------|---------------------------------------|----------|---|
| A | STARTING/FINISHING
INFLATABLE MARK | C | GREEN CAN "7" AT
CORMORANT ROCK |
| M | AN ORANGE MARK SET
SOUTH OF THE QM | F | GREEN & RED CAN "F" AT
FRANK LEDGE |
| B | AN ORANGE MARK SET
NORTH OF THE QM | H | RED NUN "2A" NORTH OF
QUEEN MERRY |
| | | J | GREEN CHANNEL MARKER
"7" EAST OF JUNK ISLAND |
| | | L | GREEN CAN "9" OFF
FORT TRUMBULL PIERS |
| | | N | RED NUN "2BL" SOUTHEAST
OFF BLACK LEDGE |
| | | P | RED BELL "2" OFF
PINE ISLAND |
| | | Q | GREEN CHANNEL MARKER
"13" OFF N.L. CITY PIER |
| | | S | RED & GREEN CAN "SL"
AT SARAH LEDGE |
| | | Y | RED CHANNEL MARKER "2"
SOUTH OF N.L. LEDGE |
| | | 5 | GREEN CHANNEL MARKER
"5" OF QUINNIPEAG ROCKS |
| | | 3 | GREEN CHANNEL MARKER
"3" WEST OF LEDGELIGHT |



Revised 2020

DO NOT USE THIS FOR NAVIGATION.
IT IS ONLY INTENDED TO BE USED TO
DISPLAY THE RACING MARKS.

OFFSHORE

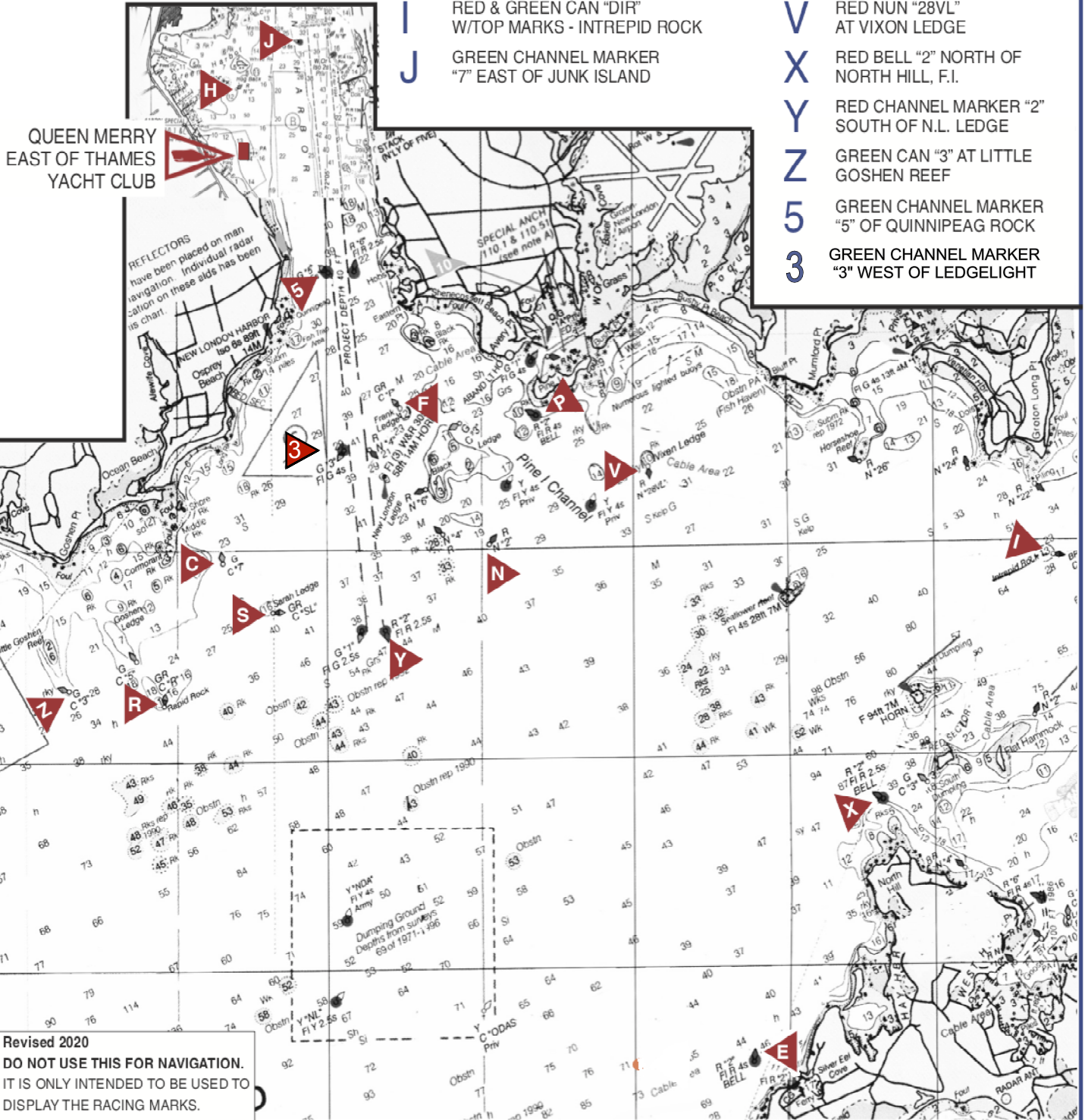


THAMES YACHT CLUB COURSE SYMBOLS AND MARKS

- A** STARTING/FINISHING INFLATABLE MARK
- M** AN ORANGE MARK SET SOUTH OF THE QM
- B** AN ORANGE MARK SET NORTH OF THE QM

- C** GREEN CAN "7" AT CORMORANT ROCK
- E** Red whistle Mo A at Silver Eel
- F** GREEN & RED CAN "F" AT FRANK LEDGE
- H** RED NUN "2A" NORTH OF QUEEN MERRY
- I** RED & GREEN CAN "DIR" W/TOP MARKS - INTREPID ROCK
- J** GREEN CHANNEL MARKER "7" EAST OF JUNK ISLAND

- N** RED NUN "2BL" SOUTHEAST OFF BLACK LEDGE
- P** RED BELL "2" OFF PINE ISLAND
- R** GREEN & RED CAN "R" AT RAPID ROCK
- S** RED & GREEN CAN "SL" AT SARAH LEDGE
- V** RED NUN "28VL" AT VIXON LEDGE
- X** RED BELL "2" NORTH OF NORTH HILL, F.I.
- Y** RED CHANNEL MARKER "2" SOUTH OF N.L. LEDGE
- Z** GREEN CAN "3" AT LITTLE GOSHEN REEF
- 5** GREEN CHANNEL MARKER "5" OF QUINNIPEAG ROCK
- 3** GREEN CHANNEL MARKER "3" WEST OF LEDGELIGHT



Revised 2020
DO NOT USE THIS FOR NAVIGATION.
 IT IS ONLY INTENDED TO BE USED TO
 DISPLAY THE RACING MARKS.

THAMES YACHT CLUB COURSE SYMBOLS AND MARKS



COURSE DESIGNATIONS


Classes will start in the order posted on the course board. The courses or the order may be changed prior the Warning Signal. The posted order will be maintained even though no boats are on hand to start in a posted class.

A circled mark symbol indicates that the mark is to be left to the STARBOARD. An un-circled mark symbol means the mark is to be left to PORT.

J Un-circled mark - mark is left to PORT

ⓐ Circled mark - mark is left to the STARBOARD

No symbol will be used to indicate the finish. It is understood that races will finish at the same mark as the starting mark (except that the Shorten Course procedure provides for ending a race at another mark of the course.)

NOTE: Where the "QUEEN MERRY"  is used as the Committee Boat, the finish mark will ALWAYS be located on the easterly end of the line, regardless of the direction of the last leg of the course.

ADDITIONAL SYMBOLS

A Where the starting line pin is selected as an intermediate mark of the course and is not one of the available TYC marks, the symbol "A" will be used (circled if appropriate.)

Example: 5 J A J

2 The symbol "2" following the course on the course board means that the course is to be sailed twice around. For the start of the second round, the starting line mark is a mark on the course and starting line shall be crossed in the same direction as the original start. The symbol "2" will not be circled.

Example: 5 J 2

C	GREEN CAN "7" AT CORMORANT ROCK
E	Red whistle Mo A at Silver Eel
F	GREEN & RED CAN "F" AT FRANK LEDGE
H	RED NUN "2A" NORTH OF QUEEN MERRY
I	RED & GREEN CAN "DIR" W/TOP MARKS - INTREPID ROCK
J	GREEN CHANNEL MARKER "7" EAST OF JUNK ISLAND
L	GREEN CAN "9" OFF FORT TRUMBULL PIERS
N	RED NUN "2BL" SOUTHEAST OFF BLACK LEDGE
P	RED BELL "2" OFF PINE ISLAND
Q	GREEN CHANNEL MARKER "13" OFF N.L. CITY PIER
R	GREEN & RED CAN "R" AT RAPID ROCK
S	RED & GREEN CAN "SL" AT SARAH LEDGE
V	RED NUN "28VL" AT VIXON LEDGE
X	RED BELL "2" NORTH OF NORTH HILL, F.I.
Y	RED CHANNEL MARKER "2" SOUTH OF N.L. LEDGE
Z	GREEN CAN "3" AT LITTLE GOSHEN REEF
5	GREEN CHANNEL MARKER "5" OF QUINNIPEAG ROCK
3	GREEN CHANNEL MARKER "3" WEST OF LEDGELIGHT
A	STARTING/FINISHING INFLATABLE MARK
M	AN ORANGE MARK SET SOUTH OF THE QM
B	AN ORANGE MARK SET NORTH OF THE QM