

**THAMES YACHT CLUB  
2020 HOSPICE REGATTA  
Sunday September 13<sup>th</sup>  
NOR/SAILING INSTRUCTIONS**

1. **RULES:**

- 1.1. The series will be governed by *The Racing Rules of Sailing (RRS)*, the Prescriptions of US Sailing, rules of the PHRF of Eastern Connecticut and the rules of participating one-design classes.
- 1.2. Rules of the road provide commercial traffic with the right of way in a restricted channel. **Failure of a racing boat to keep clear, whether intentional or not, will result in disqualification.**
- 1.3. Time-on-Time handicapping will be used for PHRF classes.

2. **ENTRIES:**

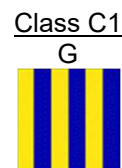
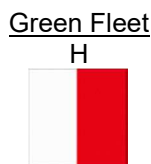
- 2.1. The series is open to all racing and cruising handicap boats and to Ensign & Force-5 one-design classes of at least three (3) entrants. Entries will be accepted or rejected and assigned to classes at the discretion of the Race Committee (RC).
- 2.2. Class assignment and handicaps will be based on the PHRF of Eastern Connecticut. At the discretion of the RC a handicap will be assigned to a boat without an established rating. It is intended to have a Green Fleet based on the Skipper's racing experience.
- 2.3. Entries close Sept. 13 @ 11:00. The attached entry form can be turned in at TYC on race day between 10:00-11:00 or submitted via e-mail as noted on the form.
- 2.4. Boats which do not have a current PHRF certificate from ECSA or from Thames Yacht Club should contact Dan Andrews to request one ([measurer@thamesyc.org](mailto:measurer@thamesyc.org))
- 2.5. This is a non-spinnaker event. Spinnakers are prohibited for all classes.

3. **CHANGES TO THE SAILING INSTRUCTIONS:** Any changes to the Sailing Instructions will be announced at the Skipper's meeting.

4. **SCHEDULE OF RACES & THE START:**

- 4.1. First Warning will be at 13:00.
- 4.2. Class assignments will be announced at the Skipper's meeting. Class flags are as follows;

*Force 5*  
Class Flag



- 4.3. Races will be started as provided in RRS 26, with classes starting in the order posted on the course board. It is intended to make the Warning Signal for a class simultaneously with the Starting Signal for the preceding class, although the RC retains the option of delaying any Warning Signal. The Preparatory Signal will be flag "P"
- 4.4. Force 5 class shall be started in accordance with the Audible-Signal Racing System (RRS –appendix U). Multiple races are planned for the Force 5 Class. This will be confirmed at the Skipper's meeting.
- 4.5. Boats whose Warning Signal has not been made shall keep clear of the starting area and of all boats whose warning signal has been made. **Failure to comply may result in disqualification.**
- 4.6. The starting line is intended to be at the Queen Merry but may be moved to the vicinity of Vixens Ledge for all or some classes depending on conditions and participation. This will be confirmed at the Skippers meeting.

9. **SKIPPER'S MEETING:** There will be a Skipper's meeting on the TYC beach at 11:30.

6. **COURSE:**

- 6.1. Courses will be displayed on the Committee Boat. Marks and course designation procedures are as stipulated on the attached Course Symbols & Marks handout.
- 6.2. The starting line will be between a staff displaying an orange flag on the Committee Boat and a starting mark
- 6.3. Note the requirement to cross the starting line to begin the second round when the "2" symbol is used.
  - 6.3.1. Additional Symbol "A" shall not be used as a mark of the course when the symbol "2" is used.
- 6.4. The RC may set as many as two Special Marks.

- 6.4.1. Mark "M", an orange inflatable set southerly of the Committee Boat on the westerly side of the channel.  
6.4.2. Mark "B", an orange inflatable set northerly of the Committee Boat on the westerly side of the channel.

**7. RECALLS:**

- 7.1. Individual recalls will be signaled in accordance with Rule 29.1 and Race Signals. The RC will attempt to hail each boat over early via voice or VHF/FM Channel 72.  
7.2. General Recall signals and procedures will be as specified in Rule 29.2 and Race Signals. The class recalled will be the next class to start. Normal starting sequence shall then resume.

**8. FINISH:**

- 8.1. The finish line will be between a staff displaying an orange flag on the Committee Boat and a finishing mark, unless the course is shortened.  
8.2. Boats unable to finish shall notify the RC before retiring from the race course.  
8.3. The finish line may be at the Queen Merry even if the starting area is not. This will be confirmed at the Skipper's meeting.

**9. TIME LIMIT** The time limit for all boats is 17:00. Boats which have not finished by time limit will be scored DNF.

**10. RADIO COMMUNICATIONS;** VHF-FM Channel 72 will be used for communication between the race committee and competing boats. Except in an emergency, a boat shall neither make radio transmissions while racing nor receive communications not available to all boats. This restriction applies to mobile telephones and other portable devices.

**11. PROTESTS:**

- 13.1. A boat intending to protest shall follow Rule 61.1. A written protest shall be delivered to a race official at the clubhouse within one hour after the RC comes ashore.  
13.2. Notices of protest hearings will be posted on the Racing Information bulletin board. It is intended that any protest be heard as soon as feasible after the day's racing. Failure of either party to appear may result in a judgment against the absentee.

**12. SCORING:**

- 12.1. The series will be scored as provided in Appendix A of the RRS, using the Low-Point Scoring System. Rule A9 also applies.

**13. AWARDS:**

- 13.1. Race results will be announced at the Clubhouse after the race.  
13.2. Participants are encouraged to support the galley and attend a BYOB beach party after the race.

**14. DISCLAIMER OF LIABILITY;** Competitors participate entirely at their own risk; see Rule 4, Decision to Race. The organizing authority will not accept any liability for material damage or personal injury or death sustained in conjunction with or prior to, during, or after the regatta. All skippers & crews are responsible for their personal safety precautions related to Covid-19 at all times. TYC safety precautions are to be followed while on the grounds, dock, launch, and Committee Boat.



**Thames Yacht Club  
2020  
Hospice Regatta  
Entry Form**

Yacht Name \_\_\_\_\_ Sail Number \_\_\_\_\_

Yacht Type \_\_\_\_\_ (i.e. Tanzer 22) Hull Color \_\_\_\_\_

2020 PHRF rating: (Spinnaker) \_\_\_\_\_ NA \_\_\_\_\_ (Non-Spinnaker) \_\_\_\_\_

Skipper \_\_\_\_\_

Telephone Number (Home) \_\_\_\_\_ (Mobile) \_\_\_\_\_

Event	Date	Entry Deadline	Minimum Donation to Hospice	Amount Enclosed
Hospice Regatta- PHRF	9/13/20	9/13/20	\$50	
Hospice Regatta- Ensign	9/13/20	9/13/20	\$50	
Hospice Regatta- Force 5	9/13/20	9/13/20	\$25	

**All checks should be made out to; Center for Hospice Care**

Total Enclosed

*I agree to be bound by the Racing Rules of Sailing and by all other rules that govern this event.*

\_\_\_\_\_  
Signature of Skipper

Return entries with current PHRF certificate to: [gibbsjudy375@gmail.com](mailto:gibbsjudy375@gmail.com)

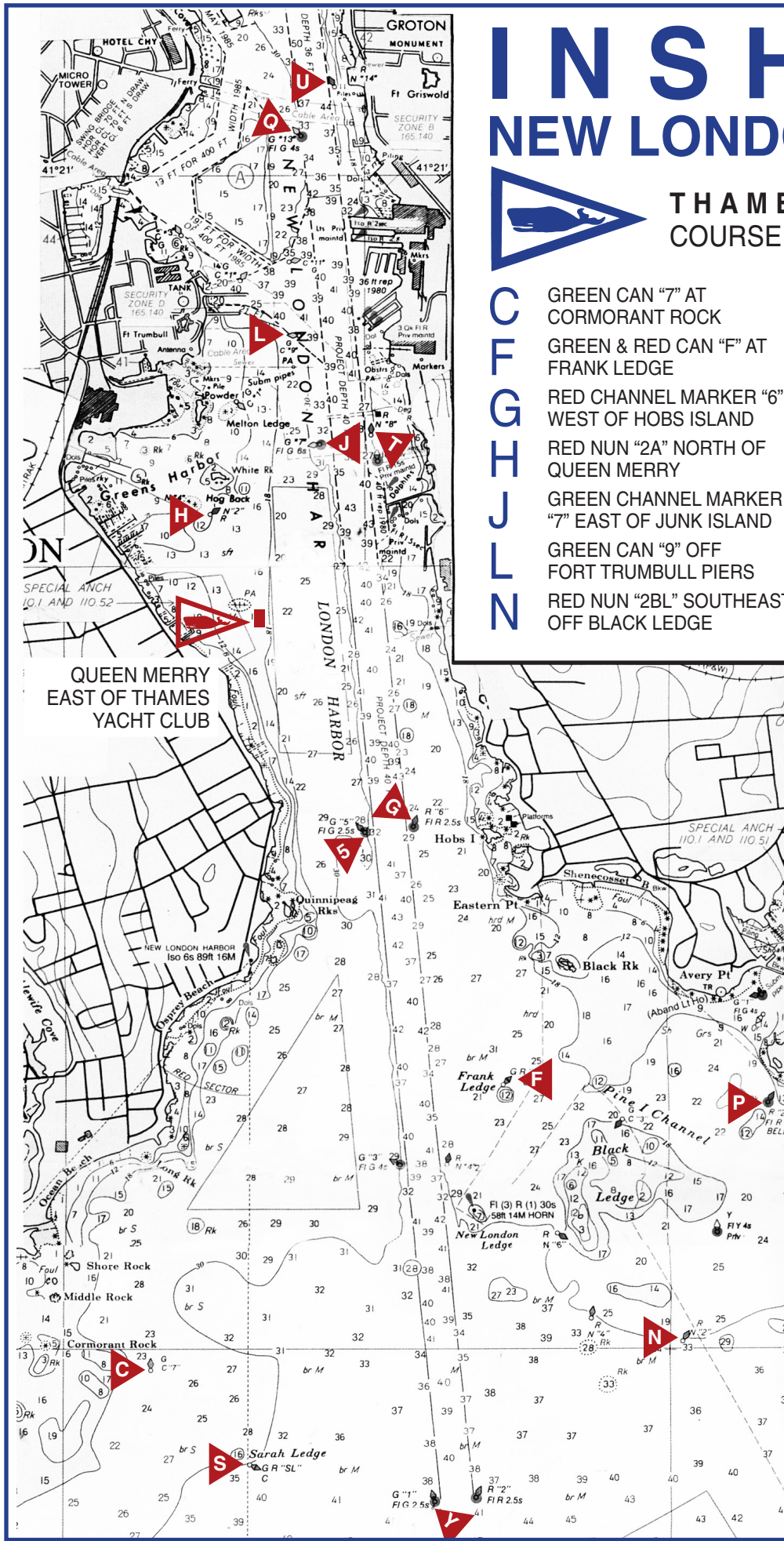
Entries may also be submitted in person at TYC on 9/13/20 between 10:00 to 11:00.

# INSHORE NEW LONDON HARBOR



## THAMES YACHT CLUB COURSE SYMBOLS AND MARKS

<b>C</b>	GREEN CAN "7" AT CORMORANT ROCK	<b>P</b>	RED BELL "2" OFF PINE ISLAND
<b>F</b>	GREEN & RED CAN "F" AT FRANK LEDGE	<b>Q</b>	GREEN CHANNEL MARKER "13" OFF N.L. CITY PIER
<b>G</b>	RED CHANNEL MARKER "6" WEST OF HOBS ISLAND	<b>S</b>	RED & GREEN CAN "SL" AT SARAH LEDGE
<b>H</b>	RED NUN "2A" NORTH OF QUEEN MERRY	<b>T</b>	RED NUN "8" NORTH OF HESS OIL PIER
<b>J</b>	GREEN CHANNEL MARKER "7" EAST OF JUNK ISLAND	<b>U</b>	RED NUN "14" OFF GROTON UTILITIES
<b>L</b>	GREEN CAN "9" OFF FORT TRUMBULL PIERS	<b>Y</b>	RED CHANNEL MARKER "2" SOUTH OF N.L. LEDGE
<b>N</b>	RED NUN "2BL" SOUTHEAST OFF BLACK LEDGE	<b>5</b>	GREEN CHANNEL MARKER "5" OF QUINNIPEAG ROCKS
		<b>A</b>	STARTING/FINISHING INFLATABLE MARK
		<b>M</b>	AN ORANGE MARK SET SOUTH OF THE QM
		<b>B</b>	AN ORANGE MARK SET NORTH OF THE QM



May 2009

**DO NOT USE THIS FOR NAVIGATION.**  
IT IS ONLY INTENDED TO BE USED TO  
DISPLAY THE RACING MARKS.

# OFFSHORE

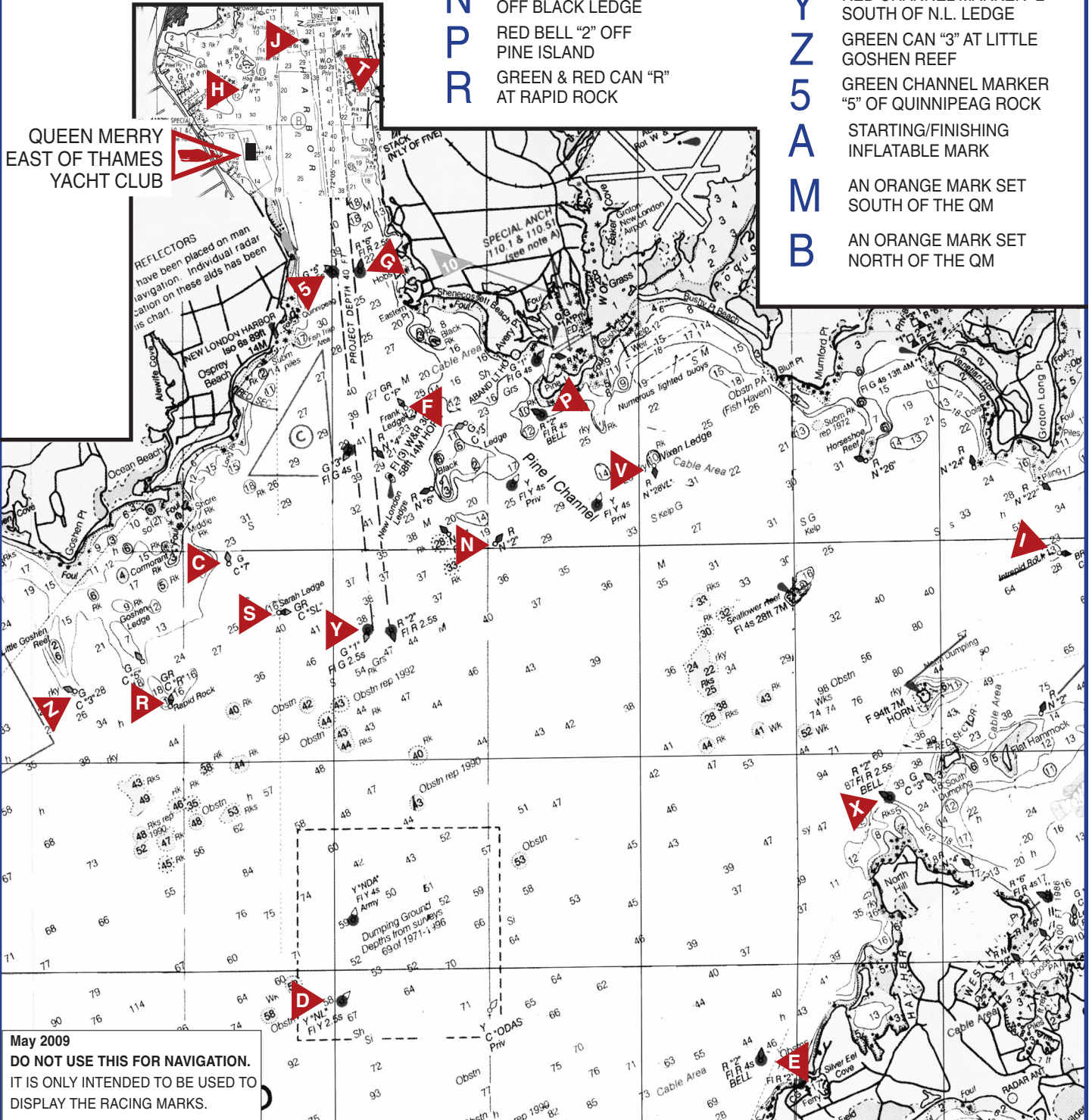


# THAMES YACHT CLUB COURSE SYMBOLS AND MARKS

- C** GREEN CAN "7" AT CORMORANT ROCK
- D** LIGHTED YELLOW BUOY "NL" AT DUMPLING GROUND
- E** RED & WHITE LIGHTED MoA WHISTLE "SE" OFF SILVER EEL POND
- F** GREEN & RED CAN "F" AT FRANK LEDGE

- G** RED CHANNEL MARKER "6" WEST OF HOBBS ISLAND
- H** RED NUN "2A" NORTH OF QUEEN MERRY
- I** RED & GREEN CAN "DIR" W/TOP MARKS - INTREPID ROCK
- J** GREEN CHANNEL MARKER "7" EAST OF JUNK ISLAND
- N** RED NUN "2BL" SOUTHEAST OFF BLACK LEDGE
- P** RED BELL "2" OFF PINE ISLAND
- R** GREEN & RED CAN "R" AT RAPID ROCK

- S** RED & GREEN CAN "SL" AT SARAH LEDGE
- T** RED NUN "8" NORTH OF HESS OIL PIER
- V** RED NUN "28VL" AT VIXON LEDGE
- X** RED BELL "2" NORTH OF NORTH HILL, F.I.
- Y** RED CHANNEL MARKER "2" SOUTH OF N.L. LEDGE
- Z** GREEN CAN "3" AT LITTLE GOSHEN REEF
- 5** GREEN CHANNEL MARKER "5" OF QUINNIPEAG ROCK
- A** STARTING/FINISHING INFLATABLE MARK
- M** AN ORANGE MARK SET SOUTH OF THE QM
- B** AN ORANGE MARK SET NORTH OF THE QM



May 2009  
DO NOT USE THIS FOR NAVIGATION.  
IT IS ONLY INTENDED TO BE USED TO  
DISPLAY THE RACING MARKS.

# THAMES YACHT CLUB COURSE SYMBOLS AND MARKS



## COURSE DESIGNATIONS


Classes will start in the order posted on the course board. The courses or the order may be changed prior the Warning Signal. The posted order will be maintained even though no boats are on hand to start in a posted class.

A circled mark symbol indicates that the mark is to be left to the STARBOARD. An un-circled mark symbol means the mark is to be left to PORT.

J Un-circled mark - mark is left to PORT

ⓐ Circled mark - mark is left to the STARBOARD

No symbol will be used to indicate the finish. It is understood that races will finish at the same mark as the starting mark (except that the Shorten Course procedure provides for ending a race at another mark of the course.)

NOTE: Where the "QUEEN MERRY"  is used as the Committee Boat, the finish mark will ALWAYS be located on the easterly end of the line, regardless of the direction of the last leg of the course.

## ADDITIONAL SYMBOLS

**A** Where the starting line pin is selected as an intermediate mark of the course and is not one of the available TYC marks, the symbol "A" will be used (circled if appropriate.)

Example: 5 J A J

**2** The symbol "2" following the course on the course board means that the course is to be sailed twice around. For the start of the second round, the starting line mark is a mark on the course and starting line shall be crossed in the same direction as the original start. The symbol "2" will not be circled.

Example: 5 J 2

<b>C</b>	GREEN CAN "7" AT CORMORANT ROCK
<b>D</b>	LIGHTED YELLOW BUOY "NL" AT DUMPLING GROUND
<b>E</b>	RED & WHITE LIGHTED MoA WHISTLE "SE" OFF SILVER EEL POND
<b>F</b>	GREEN & RED CAN "F" AT FRANK LEDGE
<b>G</b>	RED CHANNEL MARKER "6" WEST OF HOBBS ISLAND
<b>H</b>	RED NUN "2A" NORTH OF QUEEN MERRY
<b>I</b>	RED & GREEN CAN "DIR" W/TOP MARKS - INTREPID ROCK
<b>J</b>	GREEN CHANNEL MARKER "7" EAST OF JUNK ISLAND
<b>L</b>	GREEN CAN "9" OFF FORT TRUMBULL PIERS
<b>N</b>	RED NUN "2BL" SOUTHEAST OFF BLACK LEDGE
<b>P</b>	RED BELL "2" OFF PINE ISLAND
<b>Q</b>	GREEN CHANNEL MARKER "13" OFF N.L. CITY PIER
<b>R</b>	GREEN & RED CAN "R" AT RAPID ROCK
<b>S</b>	RED & GREEN CAN "SL" AT SARAH LEDGE
<b>T</b>	RED NUN "8" NORTH OF HESS OIL PIER
<b>U</b>	RED NUN "14" OFF GROTON UTILITIES
<b>V</b>	RED NUN "28VL" AT VIXON LEDGE
<b>X</b>	RED BELL "2" NORTH OF NORTH HILL, F.I.
<b>Y</b>	RED CHANNEL MARKER "2" SOUTH OF N.L. LEDGE
<b>Z</b>	GREEN CAN "3" AT LITTLE GOSHEN REEF
<b>5</b>	GREEN CHANNEL MARKER "5" OF QUINNIPEAG ROCK
<b>A</b>	STARTING/FINISHING INFLATABLE MARK
<b>M</b>	AN ORANGE MARK SET SOUTH OF THE QM
<b>B</b>	AN ORANGE MARK SET NORTH OF THE QM